

# Aladin Lite: status and perspectives



## An interactive sky atlas

Aladin Lite is a Javascript-based lightweight sky atlas, easy to embed in a Web page.

Released in 2013, it has since gained traction and is used in several projects which take advantage of its API to customize it to their own needs.

## ... easy to embed

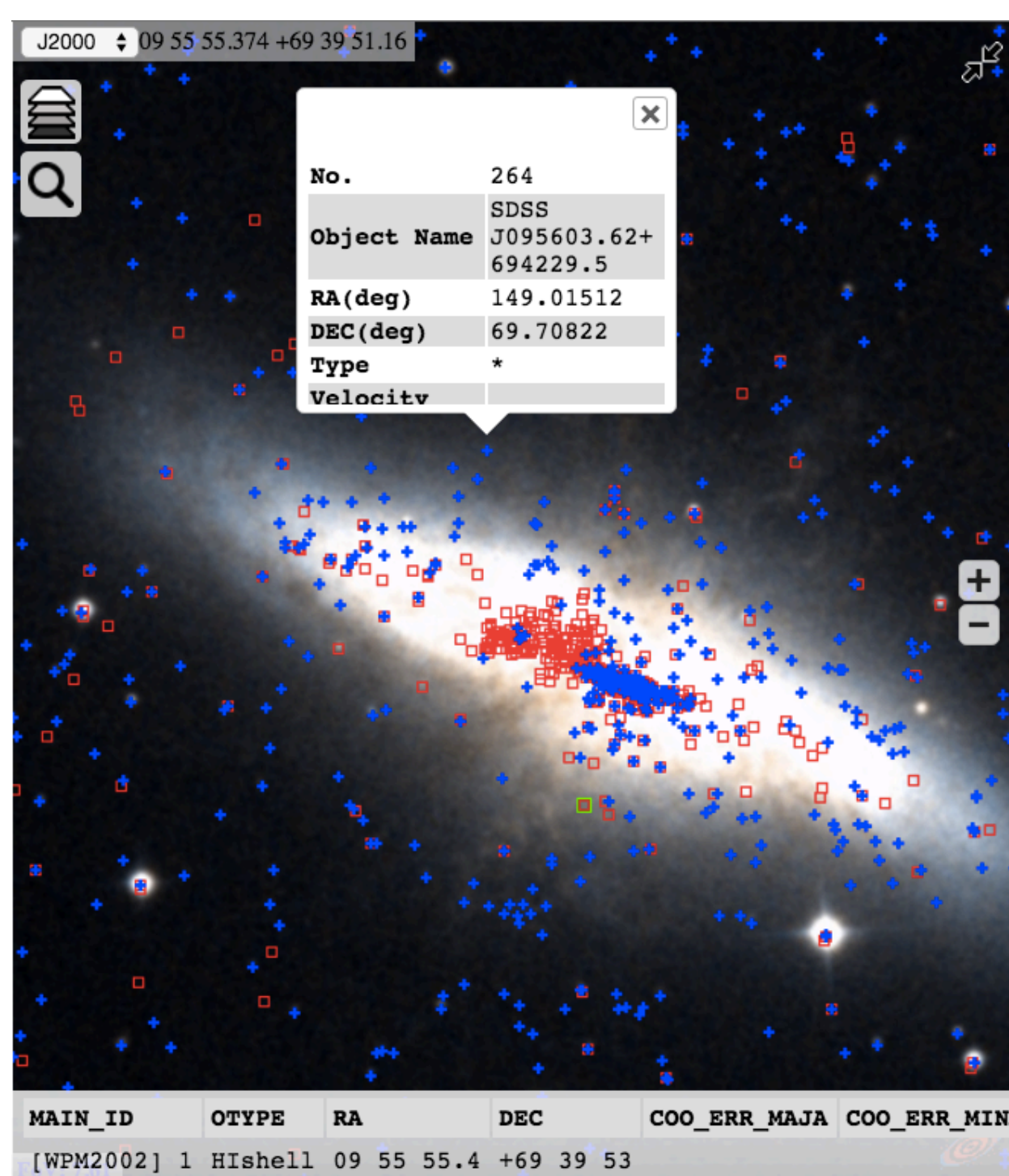
```
<link rel="stylesheet" href="http://aladin.u-strasbg.fr/AladinLite/api/v2/latest/aladin.min.css" />
<script type="text/javascript" src="http://code.jquery.com/jquery-1.9.1.min.js"></script>
<div id="aladin-lite-div" style="width:400px;height:400px;"></div>
<script type="text/javascript" src="http://aladin.u-strasbg.fr/AladinLite/api/v2/latest/aladin.min.js">
</script>
<script type="text/javascript">
  var aladin = A.aladin('#aladin-lite-div', {survey: "P/DSS2/color", fov:60});
</script>
```

## ... controllable through an API

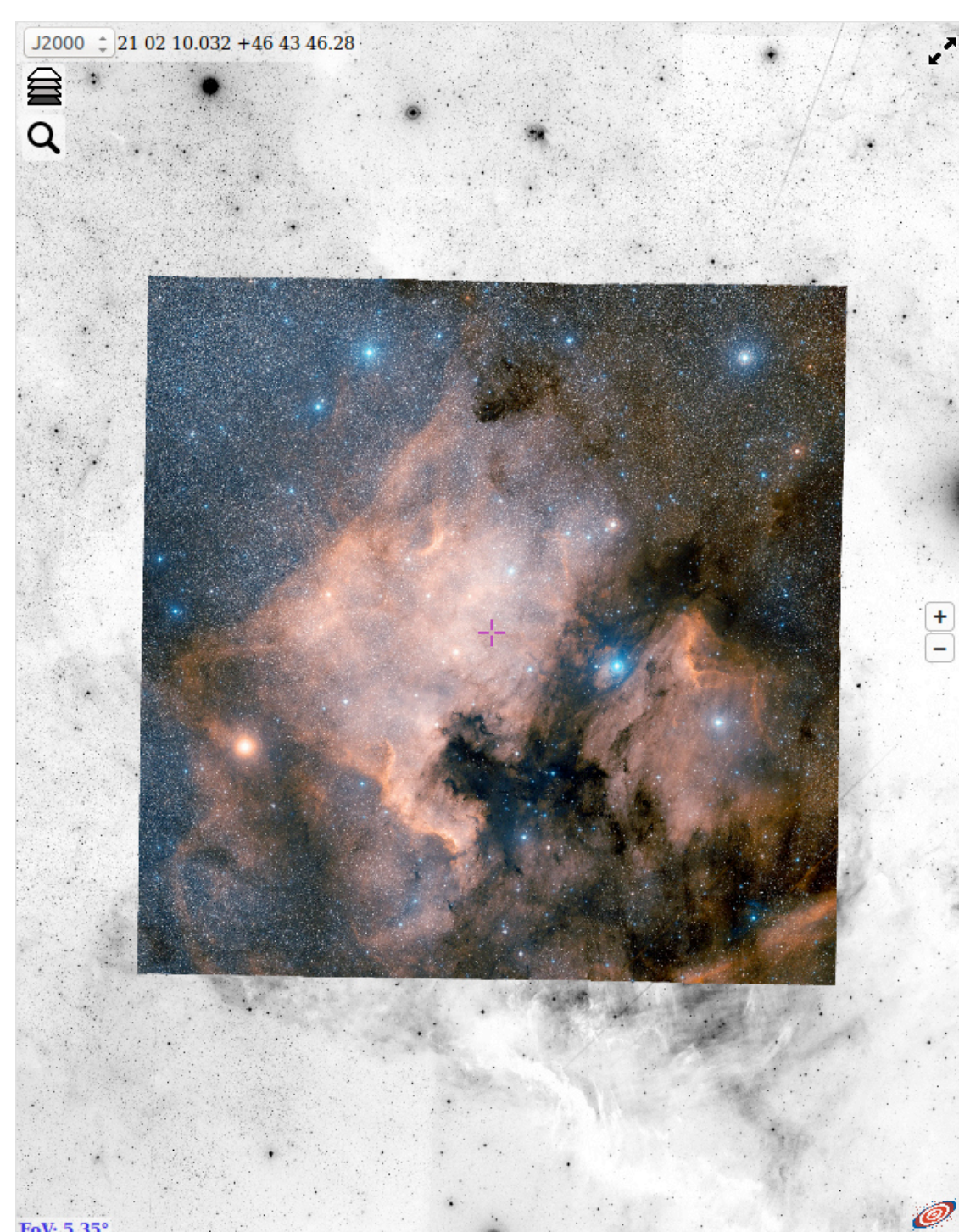
Aladin Lite API has been improved to fulfill users requests. Each API method is documented with code examples. Recent additions include:

## ... used widely

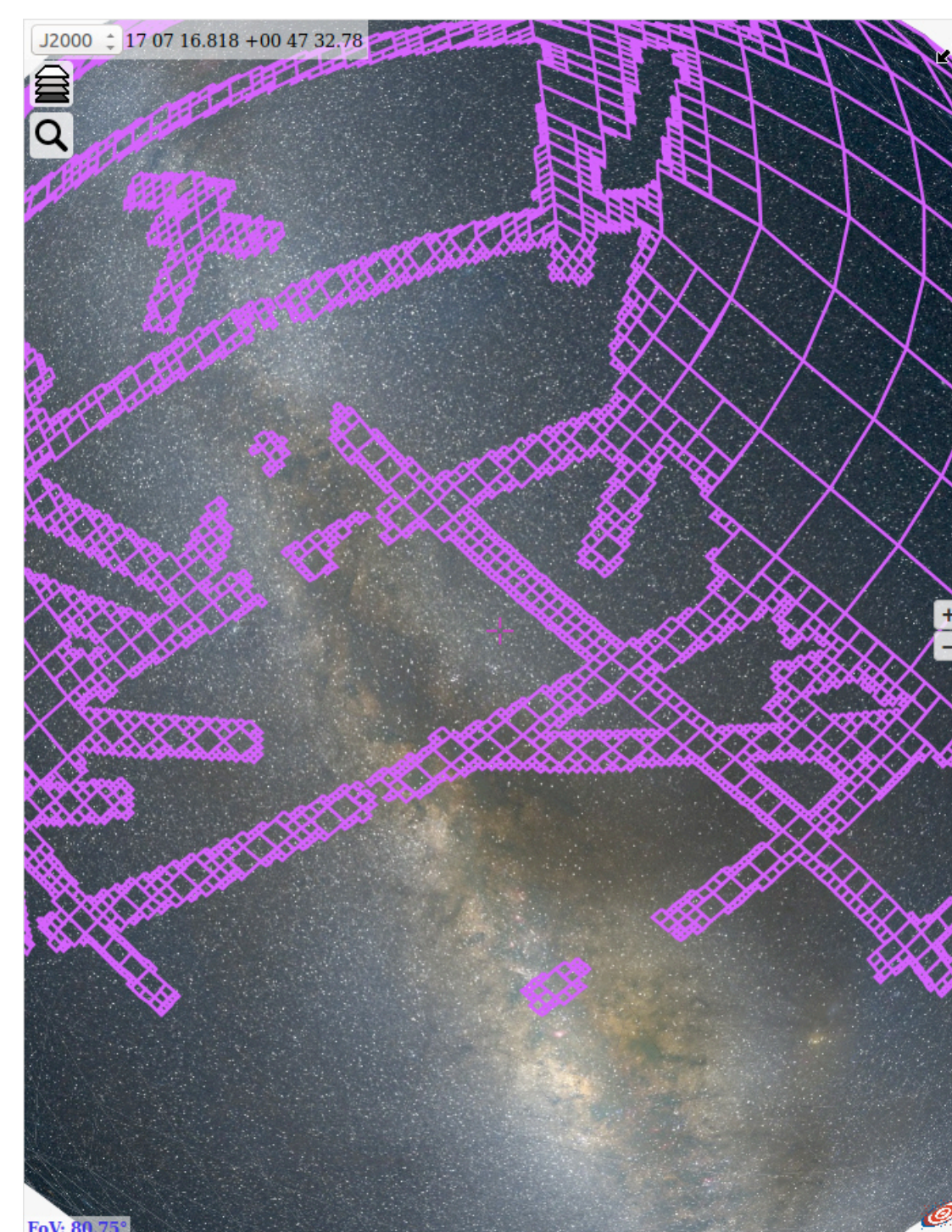
Aladin Lite has been integrated in CDS services (SIMBAD, VizieR), but also in more than 20 external websites.



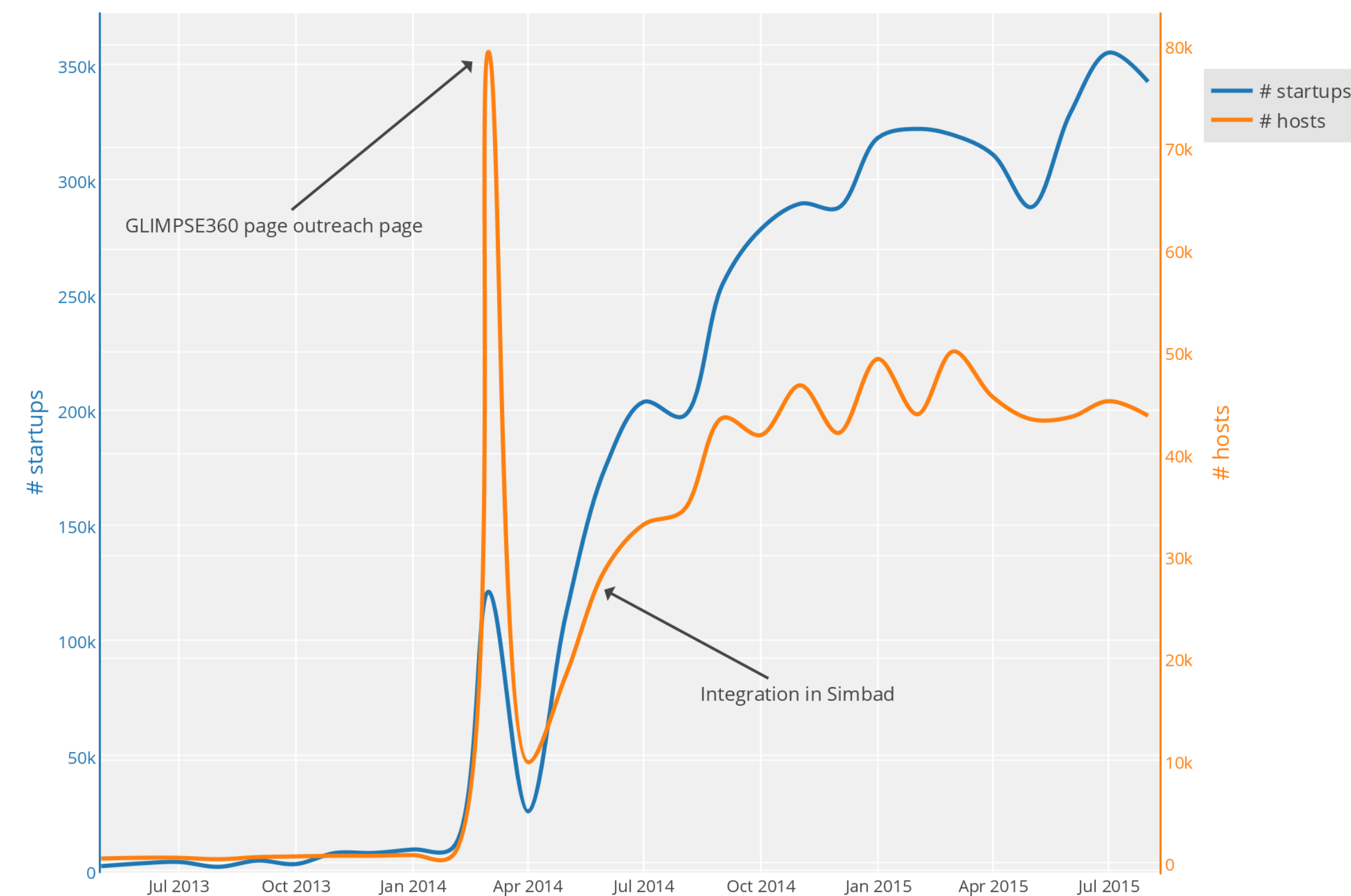
Easy access to SIMBAD, NED and VizieR data



Preview JPEG or FITS in context



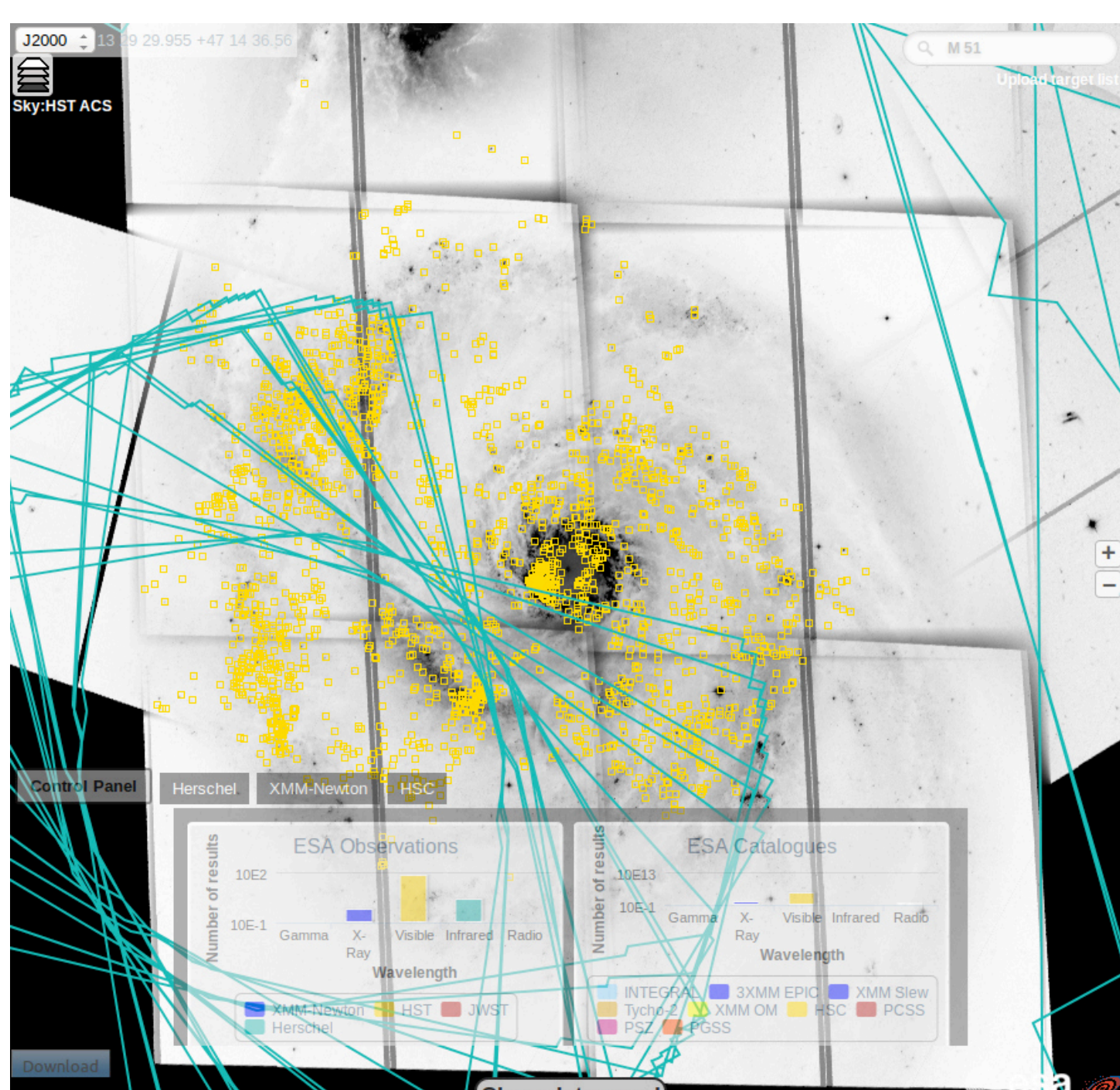
Visualization of MOC (coverage maps)



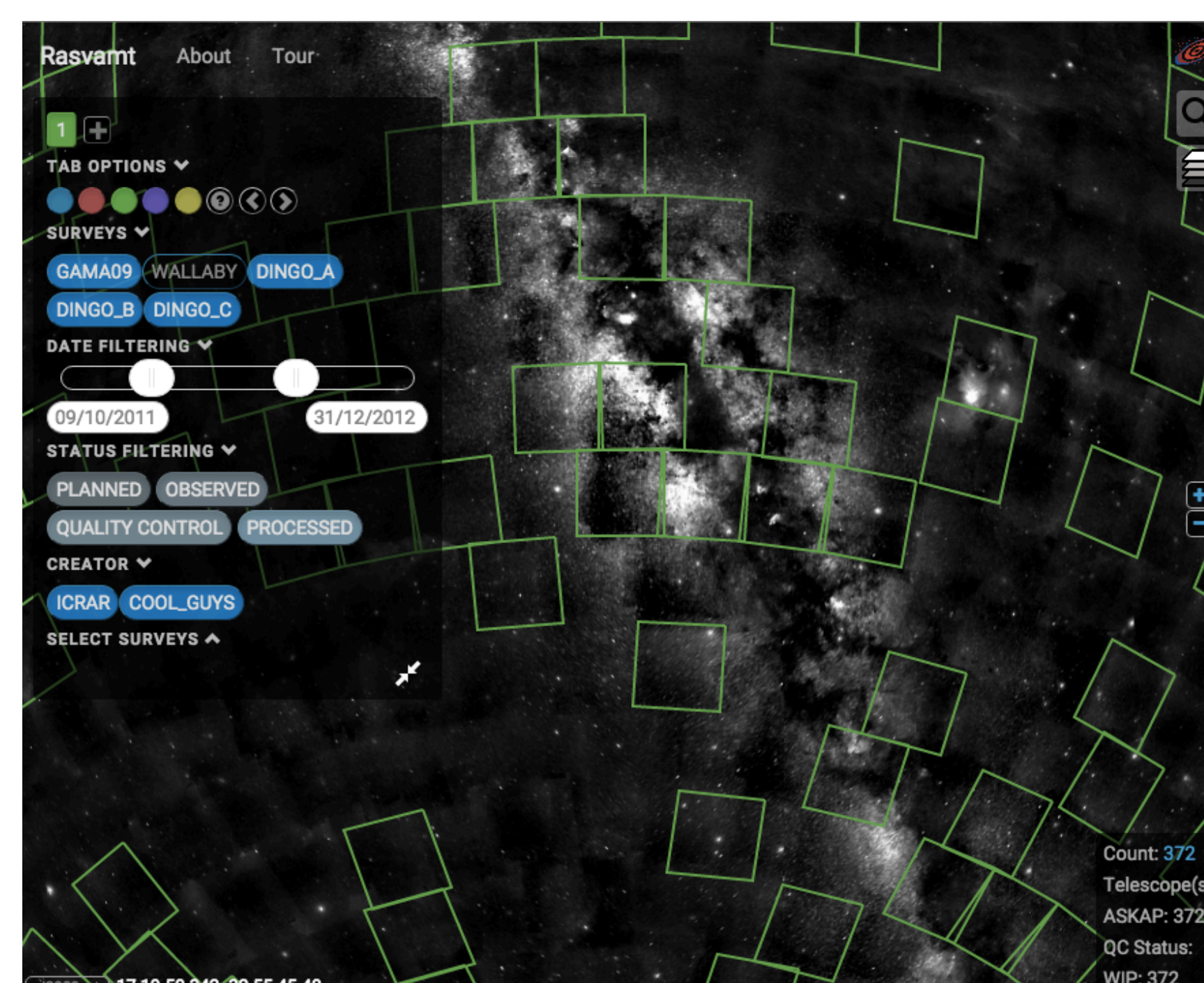
## ... in various contexts



Education and Public Outreach: GLIMPSE360 (Spitzer, IPAC) [spitzer.caltech.edu/glimpse360](http://spitzer.caltech.edu/glimpse360)



Archive portal: ESAC MMI



Survey visualization and monitoring tool: RASVAMT [github.com/ICRAR/RASVAMT](https://github.com/ICRAR/RASVAMT)

Aladin Lite is also used in the following projects:

- JUDO2 (JAXA)
- Akari explore tool (JAXA)
- LIGO
- ARCHES
- XMM SSC (IRAP)
- Planck archive (ESAC)
- eHST archive (ESAC)
- CASSIS (Cornell university)
- CADE (IRAP)
- DACE (Geneva university)
- KASOC (Kepler Asteroseismic Science)



<http://aladin.unistra.fr/AladinLite/>  
Thomas Boch, Pierre Fernique

