

OTHER CDS SERVICES

CDS PORTAL

A single entry point to search and access the different CDS services.

The CDS Portal facilitates the workflow between the services and your data with «MyCDS».

<http://cdsportal.u-strasbg.fr>

X-MATCH

A powerful cross-match service to merge by position sources from large catalogues, SIMBAD, or your own data.

<http://cdsxmatch.u-strasbg.fr/cgi-bin/Sesame>

SESAME NAME RESOLVER

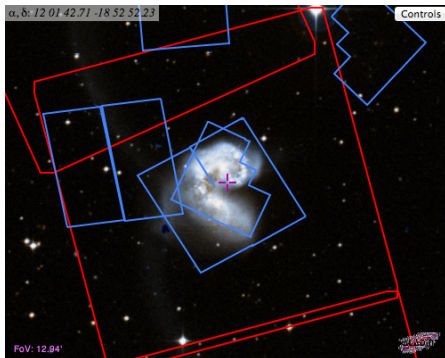
Resolve a object name to its position using Simbad, VizieR and NED.

<http://cds.u-strasbg.fr/cgi-bin/Sesame>

ALADINLITE

A lightweight version of the Aladin tool, running in the browser and geared towards simple visualization of a sky region.

<http://aladin.u-strasbg.fr/AladinLite/>



CDS AND YOU

Registering to create your own MyCDS login is easy and free. You'll get instant access to:

- writing annotations on SIMBAD objects or VizieR catalogues
- better use of your X-Match service
- expanded personal storage space
- a single entry point to search and access the different CDS services

PUBLICATION SUPPORT

You can upload your data for publication into VizieR by FTP or via a WEB tool.

Complete your data with the appropriate description following our instructions.

<http://cdsxmatch.u-strasbg.fr/cgi-bin/Sesame>

The VizieR pipeline accepts:

- the tabular data
- images
- spectra or time serie (in FITS format)

CENTRE DE DONNÉES ASTRONOMIQUES DE STRASBOURG

Observatoire de Strasbourg
11, rue de l'Université
67000 STRASBOURG, France

Tel: +33-(0)3 68 85 24 75

Fax: +33-(0)3 68 85 24 17

Email: cds-question@unistra.fr

Site: cds.unistra.fr

Twitter: twitter.com/CDSastro



STRASBOURG ASTRONOMICAL DATA CENTER

CENTRE DE
DONNÉES ASTRONOMIQUES DE
STRASBOURG



SIMBAD provides basic data, crossidentifications, bibliography and measurements for astronomical objects outside the solar system.

For each object, SIMBAD provides object types, measurements (with references), coordinates, object identifiers, a preview (using AladinLite), etc.

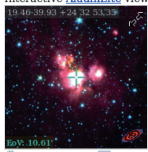
Basic data :
SH 2-87 -- HII (ionized) region

Other object types: with radius arcmin

ICRS coord. (ep=[2000]) : 19 46 20.90 +24 35 14.0 (~) [600 600 90] D
 1998A3...115.1693C

Gal coord. (ep=[2000]) : 060.8020 -90.1332 (~) [600 600 90] D
 1998A3...115.1693C

Radial velocity / Redshift / cz : V(km/s) 21.7 [~] / z(-) 0.000072 [~] / cz 23.70 [~]
 (-) D 1996AAS...115...81B

Interactive AladinLite view 

essential notes: • Found sometimes as IRAS 19442+2428 in the literature, a name which does not exist in the IRAS catalogues. (13-Mar-2010).

Identifiers (18) :

LN 066.95-00.03	87G 194413.6+242748	MTG 1194621+2435	[CPA2002] 6
IR 2 1944+24	GRS 0600.90 -00.10	IRAS 194620+243514	[TC961] 1944+2427
IR 1944+2427	IRAS 19442+2427	IRAS 2454	[TPZ1] 65
IR 2108	IR 136	SH 2-87	
GRS 01944+2427	MTG 1194623+2435	WSRTCP 1944+2427	

You can now sort bibliographic references on various criteria.

References (616 between 1850 and 2014)
 Simbad bibliographic survey began in 1950 for stars (at least bright stars) and in 1983 for all other objects (outside the solar system).

Sort reference summaries by : (not exhaustive, [explanation here](#))

2012A&A...548A.107I (in title, abstract, keyword, subtitle, caption, text)
 Astron. Astrophys., 548A, 107-107 (2012)
 Carbon and nitrogen abundances of stellar populations in the globular cluster M2.
 LARDO C., PANCINO E., MUCCIARELLI A. and MILONE A.P.

2012ApJ...760...39P (in abstract, caption, table, text)
 Astrophys. J., 760, 39 (2012)
 Hubble space telescope reveals multiple sub-giant branch in eight globular clusters.
 PIOTTO G., MILONE A.P., ANDERSON J., BEDIN L.R., BELLINI A., CASSISI S., MARINO A.F., APARICIO A. and NASCIBEN V.

2011A&A...525A.114L (in abstract, caption, table, text)
 Astron. Astrophys., 525A, 114-114 (2011)
 Mining SDSS in search of multiple populations in globular clusters.
 LARDO C., BELLAZZINI M., PANCINO E., CARRETTA E., BRAGAGLIA A. and DALESSANDRO E.

2011AJ...142..126S (in abstract, keyword, caption, table, text)

VizieR provides access to the most complete library of published astronomical catalogues and data tables available on line, organized in a self-documented database.

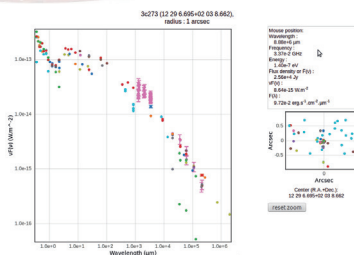
VizieR provides access to :

- 11 800 catalogues, 25 600 tables
- Large surveys: 2MASS, WISE, SDSS, UCAC, etc.
- Tables published in astronomical journals: AAS, A&A, MNRAS
- ≈ 1 500 catalogues having associated data like images, spectra, time-series

Photometry

VizieR computes photometry points for 2 200 catalogues and 147 filters, as shown in this photometry widget.

<http://vizier.u-strasbg.fr/vizier/sed/>



VizieR in the VO

VizieR shares data to VO softwares using standard like the VOTable output or SAMP.

You can query the VizieR tables with ADLQ (SQL extension for astronomy) with TAPVizieR.

<http://tapvizier.u-strasbg.fr/adql/>

ALADIN is an interactive sky atlas, allowing to visualize digitized astronomical images, and to superimpose data from many catalogues or databases.

Aladin can display regular FITS images, but also HIPS surveys (Hierarchical Progressive Surveys).

Why use HIPS surveys ?

- More than one hundred surveys already published by CDS, IAS, IRAP, etc.
- Dedicated to astronomers: low distortion even in full sky view or at the poles, true pixel value available, etc.
- Many browsers: Aladin (Java/2009/CDS), Mizar (HTML5/WebGL/2012/CNES), Aladin Lite (HTML5/Canvas/2013/CDS).
- Usable with your own data, embeddable in your own WEB pages (thanks to AladinLite).
- Build your own HiPS from your collection of images using SkyGen Java code, or directly from Aladin.

