

Processing Large Tables in SIMBAD

- **VizieR strategy : completeness** for tables larger than ~100 objects
- **Initial SIMBAD strategy** at electronic journal era: processing **most VizieR tables**

But the situation has evolved over the years :

Dramatic increase of the number of publications and tables
Mid-2006, 545 tables were pending

The nature of the tables has partly changed : more very large catalogues,
statistical purposes, less object characterization

→ **Need to define a new strategy :**

Focus on **added value in SIMBAD** : choice of the most relevant data

Make full use of the **VizieR – Simbad complementarity**

CDS portal allows to query VizieR and SIMBAD simultaneously

New Processing Strategy mid-2006

1. Publication ---> DJIN team analysis ---> report on tables to VizieR team
2. VizieR Processing ---> report on tables to be possibly processed in Simbad
- 3a. New ---> Evaluation of each publication
Weekly meeting, Raccord+astronomers teams

Priority 1 : must be processed asap
Priority 2 : should be processed, but less critical
Ruled out : objects not relevant for SIMBAD, no added value
- 3b. New ---> Systematic check of the data to be added or updated in SIMBAD
(value, accuracy, quality, etc...)
4. SIMBAD processing

Evaluation criteria

Criteria for priority 1 tables :

- ✓ Characterization of the objects : nature, properties
- ✓ Well-performed cross-identifications
- ✓ Hierarchical links, memberships
- ✓ Astrometry
- ✓ New measurements, e.g. redshift, parallaxe, magnitudes, proper motion, ...
- ✓ Number of citations
- ✓ Feasibility of the processing

Main criteria for ruled-out tables :

- ✓ No or very poor astrometry
- ✓ Large (huge) photometric catalogues without characterization, either in very crowded regions (e.g. Globular cluster), or allsky (→ special operations).
- ✓ List of extended objects without geometrical size

SPECIAL OPERATIONS AND TASKS

- More outputs from the weekly meeting : global strategy to improve SIMBAD e.g.

Systematic inclusion and update of coordinates (DJIN and Raccord teams)
Hierarchical links between objects
Magnitudes : from BV to UBVRIugrizJHK, + AB system

- Special Operations performed by Raccord « documentalistes » : e.g.

Supernovae

Exoplanets

Corrections and updates from the General Catalog of Variable Stars

- Special Operations performed by astronomers : e.g.
Including input from external collaborators

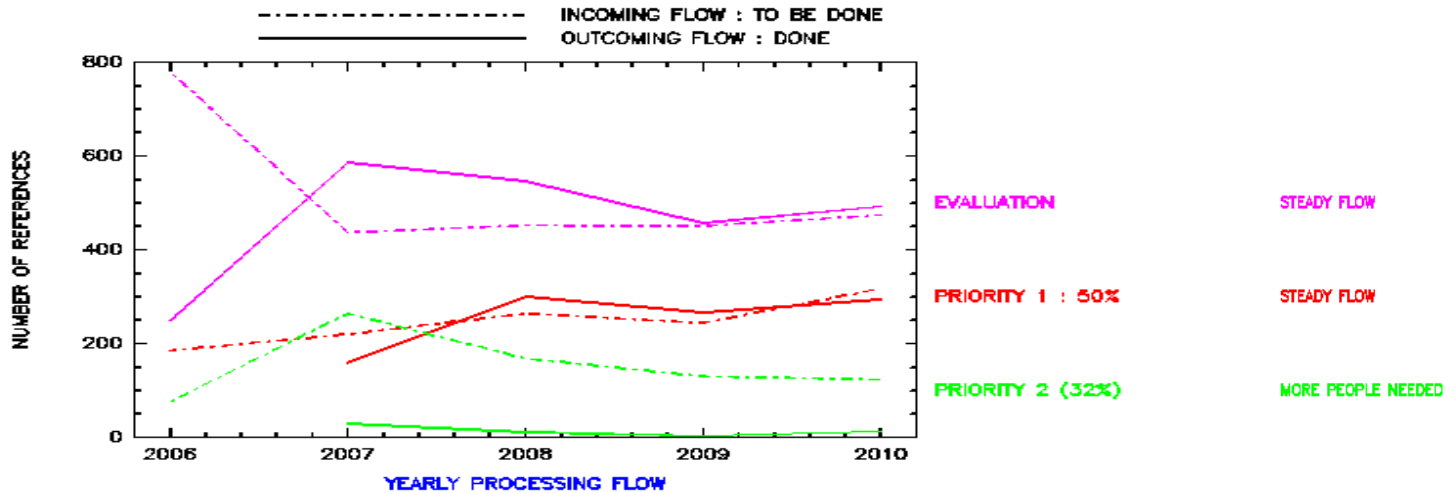
High quality position for ~6000 HD stars (which still had poor coordinates)

Cross-identifications of radio sources

Cross-identification of the 2MASS survey with the SIMBAD content

Inclusion/update of large surveys : Hipparcos, quasars, COSMOS, RAVE, ...

YEARLY PROCESSING FLOW



- Evaluation + processing of priority 1 tables : OK, follow the flow, no pending tables left
- Processing of priority 2 tables : not done, more people needed

Status according to the year of publication :

- 1 year : minimum time to process a large table in SIMBAD after publication
- 3 years : delay to reach completeness for priority 1 tables