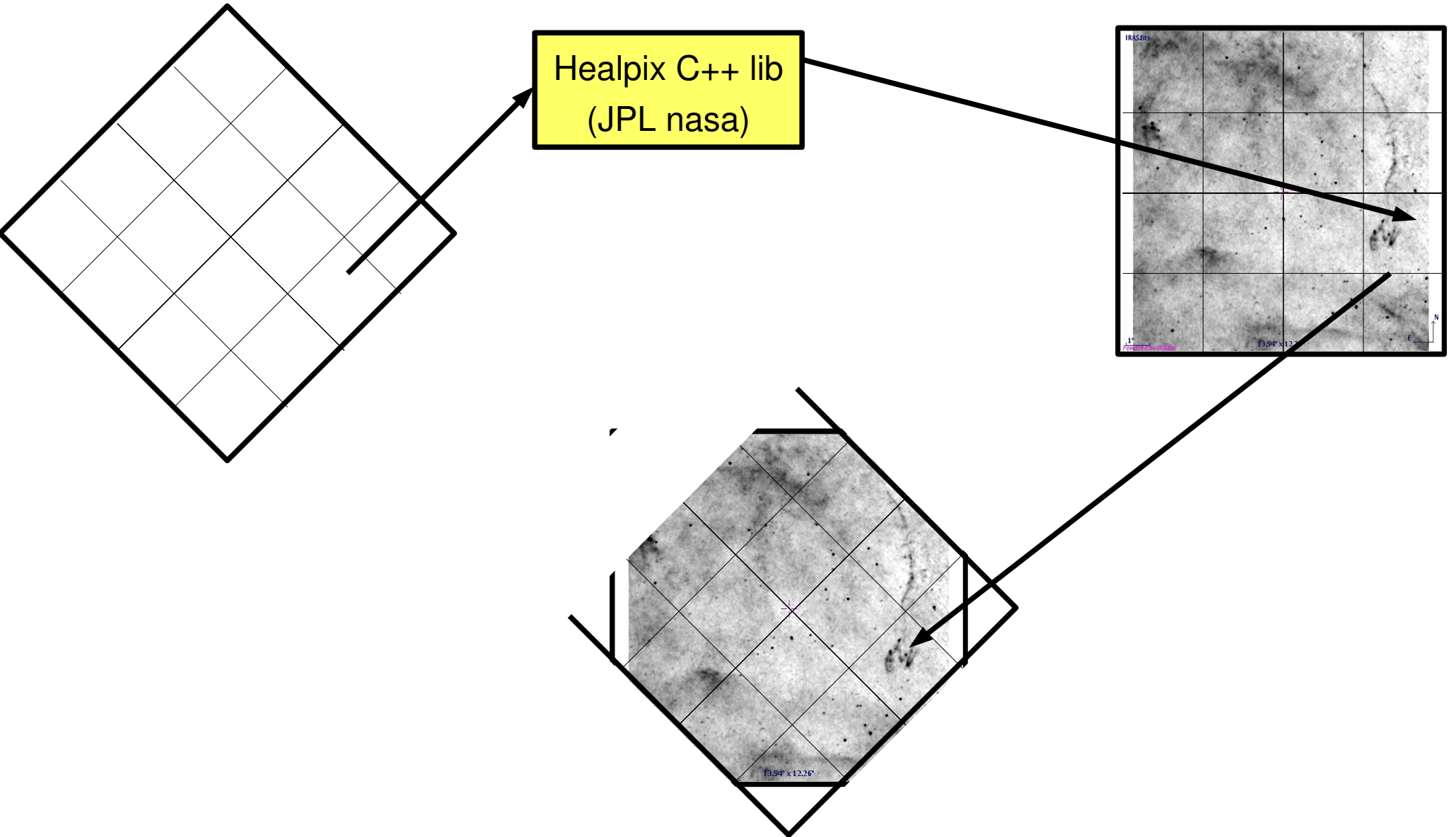
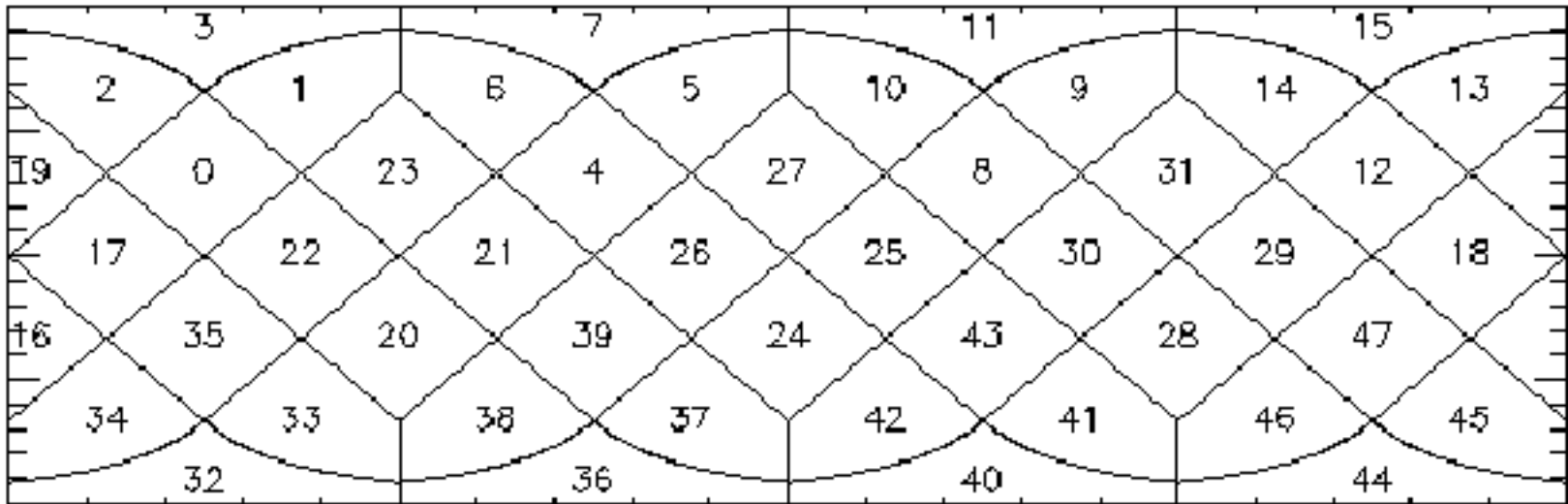


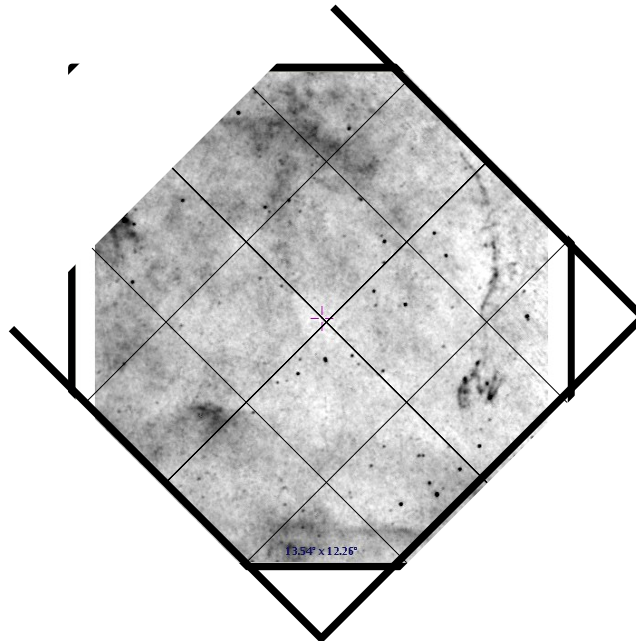
# Aladin Sky Browser



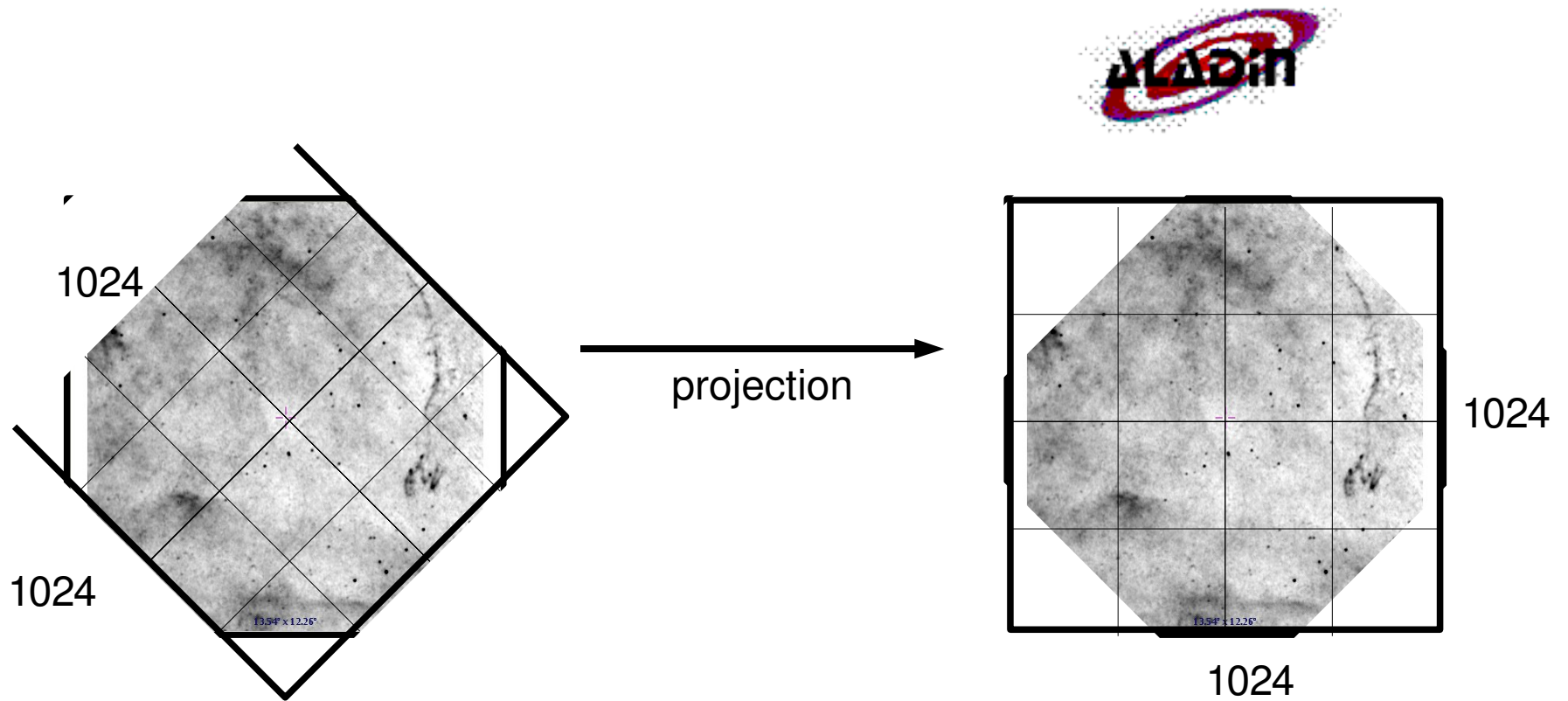
# Aladin Sky Browser



Nside = 2<sup>4</sup>

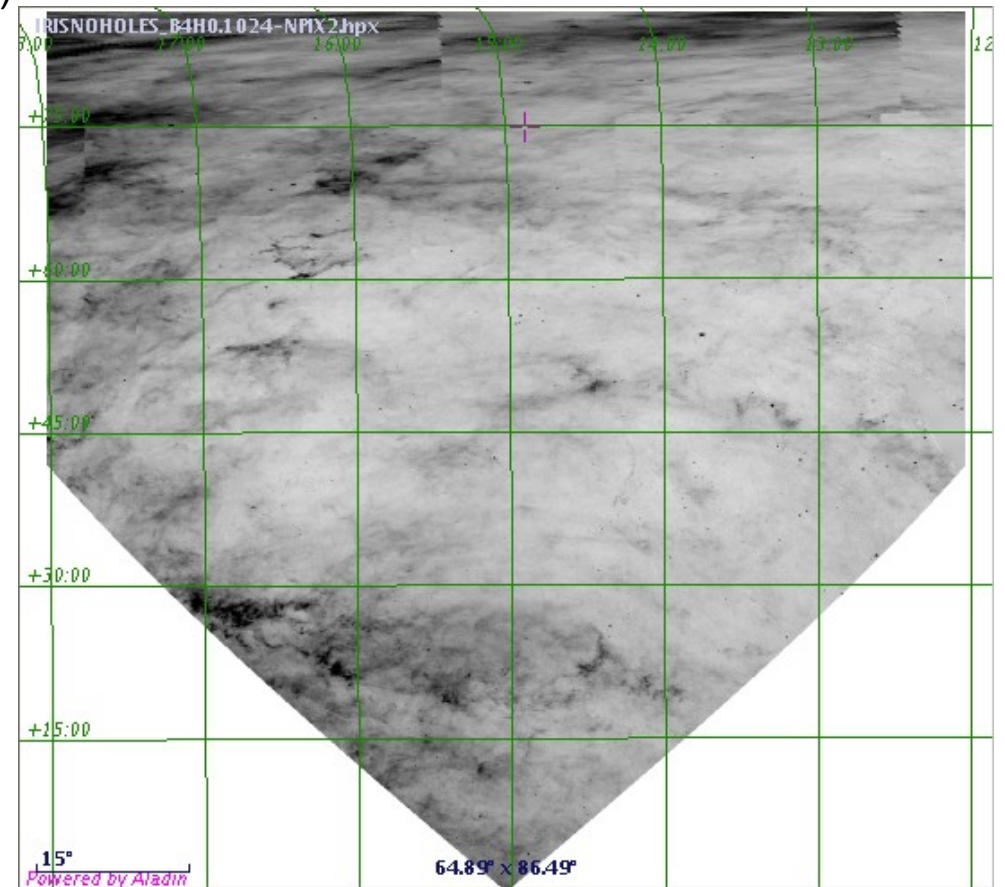
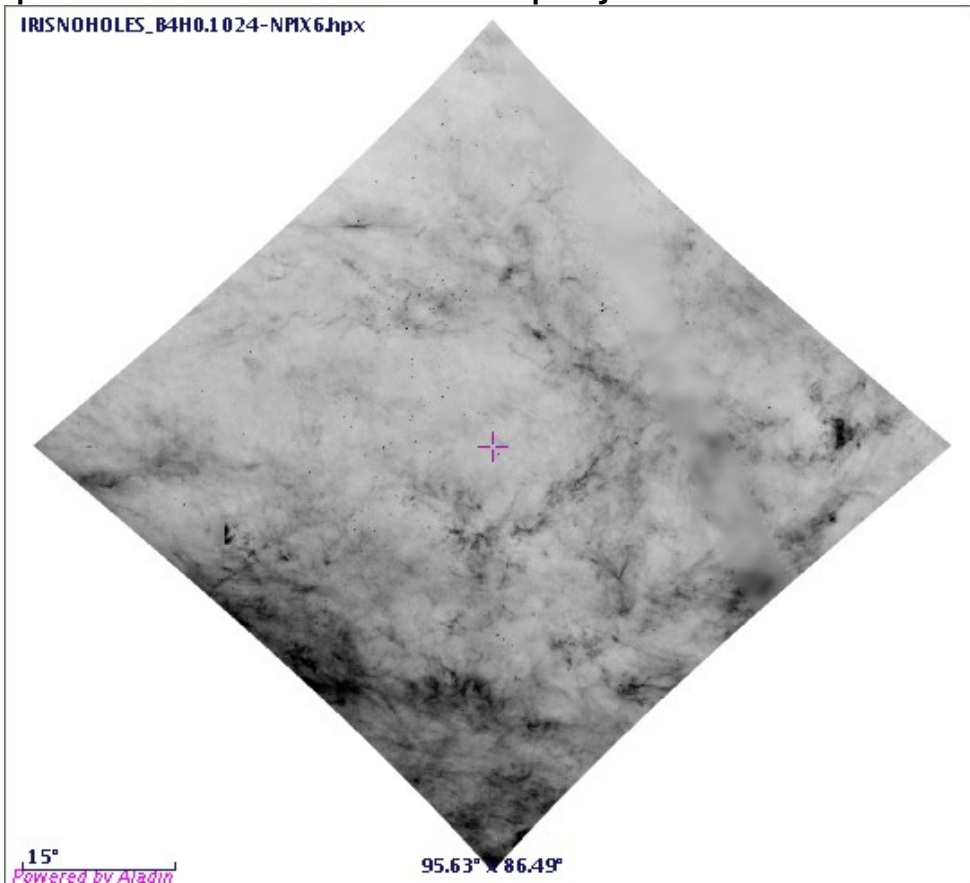


# Aladin Sky Browser



# Exemple IRIS (430 fichiers)

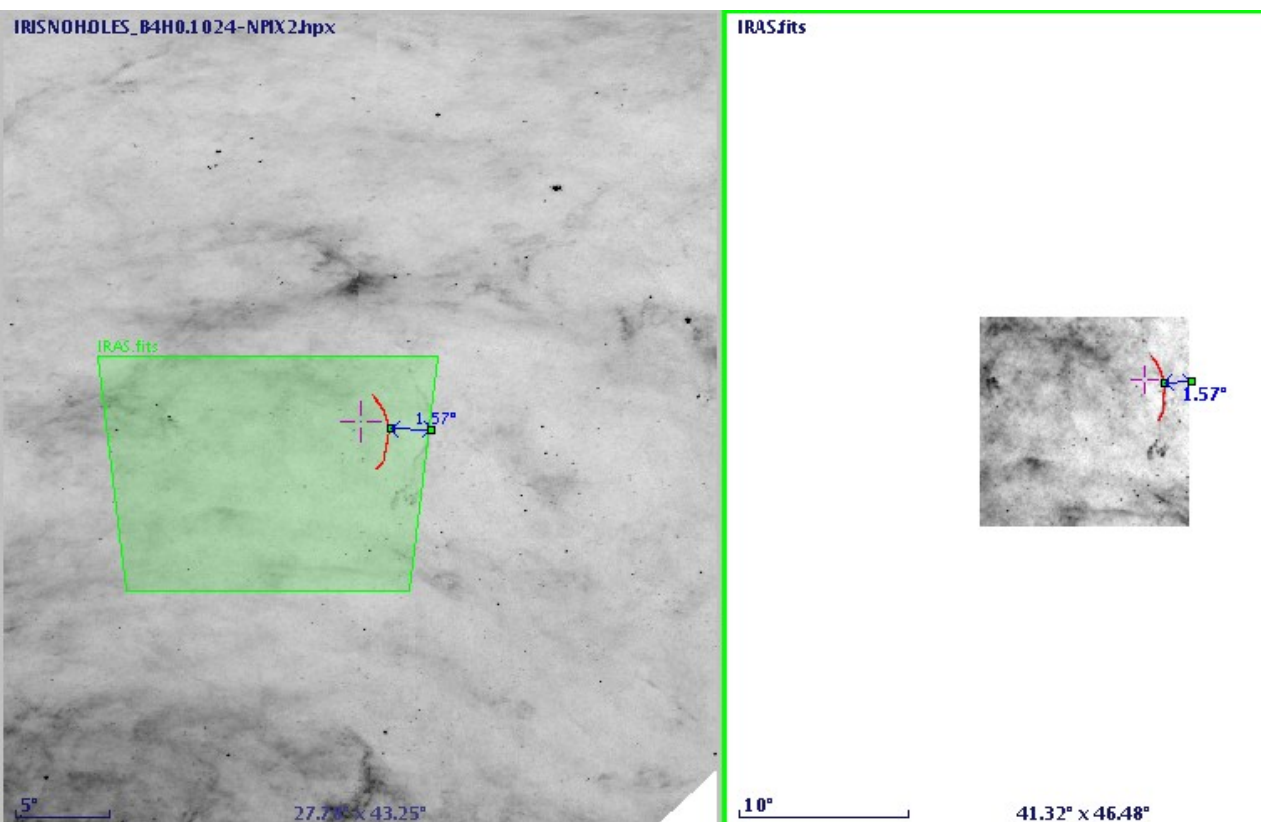
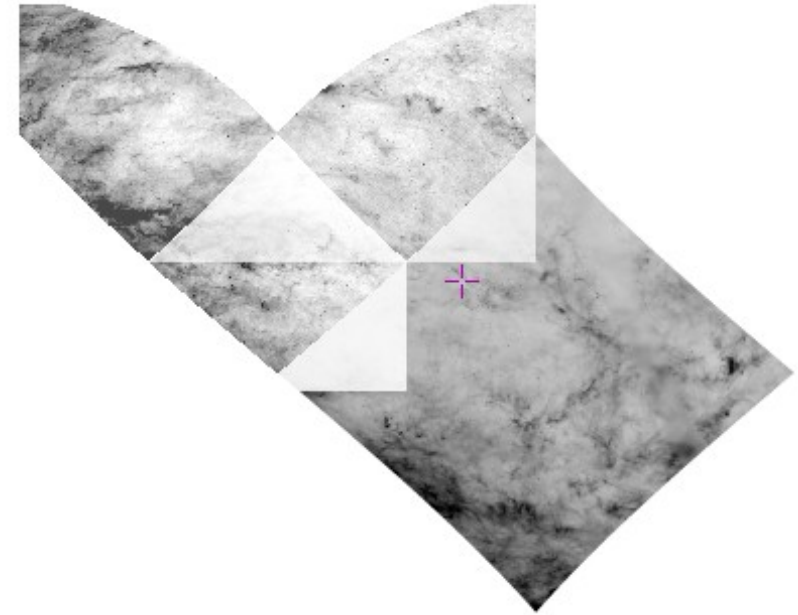
1024\*1024 ; float(-32) ; 4Mo (64Mo projeté ???) 2min  
pour la construction + reprojection



Problème de projection aux pôles  
(cartésien)

# Exemple IRIS

Problème de décalage de 1.5 degrés



# Limitation $2^{13}$

- limite à 1 pixel de 30 arcsec =  $2^{13}$  à cause de  $12 \cdot (2^{14})^2 > 2^{31}$  (**signed int**)
- Lib JPL -> **unsigned long** ?
- Thomas : PixTools (java to C++ ?)
- => limité à 1 pixel de 0.3 msec =  $2^{30}$  ( $< 2^{32}$ )

# Client Aladin

- Combinaison (mosaïque) pour une visualisation complète
- Requêtes au serveur
- Version particulière